

UPCOMING IPO PERFORMANCES

FEB
24
7:30PM

SIERRA & GERSHWIN

Stilian Kirov, *Conductor*
Sean Chen, *Piano*

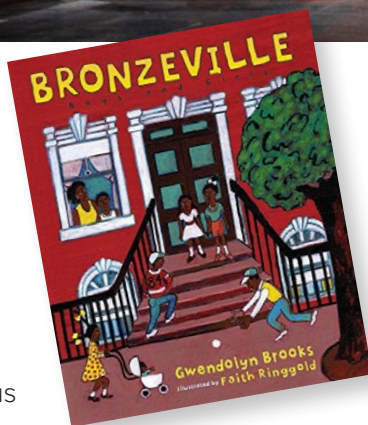
Join us as Sean Chen guests with IPO for a performance of Gershwin's Piano Concerto in F. Additionally, IPO is thrilled to be co-commissioning a new work by Arlene Sierra as part of the Virginia B. Toulmin Orchestral Commissions Program.

Sean Chen

MAR
16
3PM

DEBUSSY, V. WILLIAMS & THOMAS

Stilian Kirov, *Conductor*
Elizabeth Huffman, *Violin*,
IPO Assistant Concertmaster
Anima Glen Ellyn Children's Chorus
ChiArts



DEBUSSY (arr. Mouton) *Suite bergamasque*

VAUGHN WILLIAMS *The Lark Ascending*

THOMAS *Gwendolyn Brooks Settings*
World Premiere Co-commission

IPOMUSIC.ORG // 708.481.7774

Programs and artists subject to change

DECEMBER 9, 2023

IPO



ILLINOIS
PHILHARMONIC
ORCHESTRA

Stilian Kirov, *Gibb Music Director*

2023/24
SEASON





The Cultural Gem of the Chicago Southland

Connecting Artists and Audiences to INSPIRE, ACTIVATE, and TRANSFORM the World.



NATHAN MANILOW SCULPTURE PARK

One of the USA TODAY 10 Best Readers' Choice for Sculpture Parks in the country.

100 acres of open prairie, grass paths guide visitors around a lake and through a collection of 30 monumental outdoor sculptures. On and around the campus of Governors State University.



Free admission and parking.
Free Otocast app for GPS guide to the collection.
Open from dawn to dusk 365 days a year.

theNate
NATHAN MANILOW SCULPTURE PARK

govst.edu/sculpture

MORE THAN ART HAPPENS HERE



ART | education | community |
SOCIAL | engagement

visual arts
GALLERY
govst.edu/gallery

Governors State University • 1 University Parkway, University Park, IL 60484

Thank you

IPO is grateful for the support of
The Davee Foundation Fund

In Loving Memory of

Ruth D. and Ken M. Davee

Lifelong Contributors to the Arts

SPONSORS



GAYLORD AND
DOROTHY DONNELLEY
FOUNDATION



Programs are partially
supported by a grant from the
Illinois Arts Council Agency.



Gerhard Designing
& Manufacturing, Inc.

Check Out IPO proudly
sponsored by



Suburban Youth Symphony Orchestra

The Suburban Youth Symphony Orchestra is a non-profit group which aims to provide quality string opportunities in Chicago's south and southwest suburbs.

We have two string orchestras, as well as beginner violin programs in Richton Park, Palos Park, Glenwood, and Crete.

visit our website for more information
www.suburbanyouthsymphony.org



syso.ig



suburbanyouthsymphonyorchestra



Dear Friends of the IPO,

Our 46th season is upon us, and I cannot wait to embark on another exciting musical journey filled with great music. Our orchestra continues its mission to bring outstanding concerts to our audiences with works by great composers of the past, but we also bring you new discoveries we hope you will all find very exciting. This season, we have exceptional, world-class guest artists; world-premieres; plenty of music from all different parts of the world; and from composers of diverse backgrounds.

I am so proud of our IPO team and what we have accomplished over the past few years. The orchestra is gaining national and international recognition due to our exceptional programming and performances.

Here's to a great 2023–24 Season and thank you so much for being part of Illinois Philharmonic's musical family.

Sincerely,

Stilian Kirov, IPO Gibb Music Director

Welcome to the IPO's 46th Season as a professional orchestra. We have grown up! Long-time concert attendees have seen the IPO mature by expanding repertoire. We have included more works by American composers, featured young emerging composers through our *Classical Evolve* program, and in recent seasons, presented more diverse programming with works by women and Black composers.

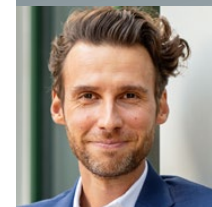
The IPO's Equity, Diversity, and Inclusion efforts have introduced not only our audience but even our illustrious music director to previously unfamiliar, fabulous orchestral music! While enjoying this addition to our programming, we continue to be committed to playing the classical works our audiences have always loved.

This season begins with a celebration of Music from the Americas, both North and South, and continues with the premiere of the Concerto for Orchestra by Wynton Marsalis and a new commission by Arlene Sierra, part of the Virginia Toulmin Orchestral Commission Program for women composers. Through the Marilyn Tannebaum Youth Music Education Institute, IPO is having an increasingly large impact on the lives of young people in the South Suburbs.

As President of the IPO Board, I am very excited to be part of all we are doing and happy you are here to enjoy it with me.

Sincerely,

Barbara Sturges, IPO Board President





Welcome to Trinity Christian College!

I am delighted you are here, and that IPO calls our Ozinga Chapel its concert home. Trinity is a Christian liberal arts college dedicated to preparing students for lives of purpose in their chosen vocation.

At Trinity, we care deeply about greater access to transformative education, and our Transformative Colleges Initiative embodies this approach. This initiative aims to 1) make higher education finances more transparent and more accessible to all people, 2) allow students the ability to work towards debt-free education, and 3) build meaningful relationships with businesses and organizations where we can build mutual partnerships.

If you are interested in learning more about this transformational approach, please email president@trnty.edu. Trinity graduates can be found throughout the world in nearly every discipline—all faithfully serving their organizations and their communities.

We invite you to walk around campus, meet members of our community and peruse Trinity's website at trnty.edu for more information about our mission.

Aaron J. Kuecker, Ph.D.
President, Trinity Christian College

ILLINOIS PHILHARMONIC ORCHESTRA

ADVANCING CLASSICAL MUSIC IN THE SOUTHLAND

IPO **is** Music—onstage, in the classroom, and throughout our diverse community. Programs impact over 11,000 individuals annually in a multitude of harmonious ways.

CONCERTS

6 Subscription, Holiday, Family-Friendly, Chamber

Annually **12+** Concerts
> 6,000 Patrons from 88 communities

COMMUNITY ENGAGEMENT & EDUCATION

Impacts **4k** students & community members each year

Youth Concerts, Musician Coaching, Conductor visits, Library programs, Lectures, and more

FRIENDS OF THE IPO

Builds community camaraderie in support of IPO.

Annual Fashion Show & Rising Star Showcase

Donated Over **500k** to IPO since 1989

EXPANDING CLASSICAL MUSIC

21 World Premiere Commissions

50+ International Guest Artists

HISTORY OF IPO

Now in our 46th Anniversary Season, the Illinois Philharmonic Orchestra (IPO) is a leading performing arts organization in Chicago's Southland, providing professional orchestral music of beauty and excellence to the region. IPO's repertoire ranges from Baroque and Classical masterpieces to world premieres and modern favorites.

During our exciting 46th season, IPO will perform five Saturday evening classical concerts and two Saturday matinee performances, one being *IPO Holiday Festival: A Celebration of Voice & Music*, our annual holiday concert in December. All season concerts are held at Ozinga Chapel at Trinity Christian College in Palos Heights. IPO will also present its sixth season of *IPO Summer @ Olympia Fields Country Club*, a series of IPO musician chamber music performances in Olympia Fields, Illinois.

IPO's history dates back to 1954. Then known as the Park Forest Orchestra, it was formed at the community level with volunteer musicians. In 1978, the orchestra was reformed into a professional chamber orchestra performing in Park Forest. In 1982, the orchestra was renamed to reflect its regional mission. Instrumental to IPO's growing success was the naming of Carmon DeLeone as Music Director in 1986. During DeLeone's 25-year tenure, IPO expanded its Artists-in-the-Schools Education Program to include interactive Youth Concerts. In the 1990s, IPO performed in residence at the Center for Performing Arts at Governors State University in University Park. In 2008, the orchestra began a new residency at the Lincoln-Way North Performing Arts Center in Frankfort, a regionally centralized location. Maestro

DeLeone became Conductor Laureate of the IPO in 2011. After an international search process, IPO appointed David Danzmayr as Music Director, serving from 2012–2016 and expanding IPO's programming to include an American work on every program. In 2017, following a search that attracted over 170 applicants from around the world, IPO's Board of Directors announced the hiring of Stilian Kirov as Music Director beginning with the 40th Anniversary Season. Kirov has expanded IPO's repertoire and developed *Classical Evolve*, the company's first Composer-in-Residence Competition.

IPO has a 46-year track record of expertly managing concerts and youth programming. Leadership, both Executive and Artistic, is bringing new vitality to the organization with an eye towards future programming growth, increased community partnerships, and strengthening the orchestra's fiscal foundation. In 2019, the orchestra unveiled an institutional commitment to address equity, diversity, and inclusion. IPO is led by a 28-member Board of Directors focused upon aligning the organization's goals to the needs of the Chicago Southland. IPO believes in the power of high-quality music and music education to transform lives.

IPO's Board of Directors and Senior staff are dedicated to utilizing their talents, connections and skillsets to broaden the quality of life in and around Chicago's Southland to include a vast array of musical offerings.

Named "Illinois Professional Orchestra of the Year" by the Illinois Council of Orchestras in 1991, 2010 and again in 2020, recognizing IPO's overall artistic excellence.

LEARN MORE AT IPOMUSIC.ORG

BOARD MEMBER HIGHLIGHT



BRUCE WERTH

What kind of musical background do you have—as a musician and / or as a lover of music—starting from when you were in

school? I studied piano from third grade until high school and violin from fourth grade until college. I've sung in numerous chorus groups since the fourth grade and continue to do so today, participating in church choir and small groups.

What initially drew you to IPO? My mother was active as a performer and founding Board member of another local symphony orchestra starting back in the 1950's. My family has always been active in local community orchestra groups—supporting them as a performer, administrator and an audience member. It was a natural transition to become a supporter of IPO when asked to serve as a Board member back in the 80's—as my wife and I were already attending performances and appreciating the talents being demonstrated by the IPO musicians.

How / why did you join the Board? I had been on the Board of another local symphony orchestra previously. I felt the importance of serving with IPO, so our local community would continue to benefit from the performances and cultural exchange that a professional orchestra provides.

How has your Board experience been?

I have served numerous times on the IPO Board and each time has provided new administrative opportunities, new friendships, and a heightened appreciation for the value this organization provides to community.

What are some things you enjoy about IPO both personally and what you enjoy that IPO brings to the community?

The ability to experience the musical sounds and professional artistry of a world-class orchestra in a local setting makes each performance special. Additionally, I enjoy the warmth that the social element of attending concerts and many well-planned events with friends and family affords.

Tell us a little about your profession.

I worked for the First National Bank of Chicago Heights, Frankfort and Olympia Fields for thirty-five years serving in many officer capacities, ultimately as Chairman and President. When Bank Group was sold in 2006, I began my own sales finance company which, for the past sixteen years, has been providing financing to individuals who are purchasing manufactured homes in communities throughout multiple states.

Are you a native of the south suburbs?

If so—where did you grow up? If not—when and why did you come to the south suburbs? I was born and raised in Chicago Heights. After attending Iowa State University, I returned and married my wife Lynn, whom I attended Bloom High School with. We lived in Chicago Heights for the next eleven years before moving to Homewood. We moved to our current home in Crete in 2002.

Tell us about your family—kids, grandkids, pets, etc.

Lynn and I have two children; Dana Teefey, who lives in Quincy, IL, is married to Dan Teefey and has four children. Our son Curtis Werth lives in Munster, IN, is married to his wife Lisa and they have two children. Lynn and I have a very spoiled dog, Midge, who came to us from a shelter nine years ago.

BOARD OF DIRECTORS / STAFF

OFFICERS

Barbara Sturges
President
Kathleen Field Orr
Immediate Past President
Karen Hoag
Vice President
Richard Davis
Treasurer
Patricia Barker
Secretary

BOARD MEMBERS

Charles Amenta, M.D.
Janice Barry
Cheri Boublis
Sam Brown
Joey Buck
Christie Lynn Buralli
Timothy J. Coburn
Christine Cochrane
William Donne
Billie Hauser
Andrea Hetzel
William E. Hofmann
Corinne Hwang
Dory Machtinger
Nichole C. Patton
Don Ransford
Dr. Michael Rogers
Donnell Schwarz
Marilynn Tannebaum
Bruce Werth
John Westerman
Terri Winfree, Ph.D.
Steve Winger

LIFE DIRECTORS

Stan and Lois Birer
Frank Corral
Richard and Andrea Gibb
Craig C. Grannon
Jerri E. Greer, Ph.D.
Stacy Holland
Daniel G. Kaplan
William J. Kiehl
Anne Michuda
Mel Muchnik, Ph.D.
Don Ransford
Carolee Samuels
Audrey Sander
Helen Silvia*
Lawrence A. Wyllie, Ed.D.

HONORARY DIRECTORS

Steve Baker
Ellen Davis
Pam McDonald

ARTISTIC CONSULTANT

Henry Fogel

FRIENDS OF IPO

Pam McDonald,
Membership
Joey Buck
Fashion Show
Ellen Davis,
Maryellen Tomassetti
Rising Star Showcase

* remembered

ADMINISTRATIVE STAFF

Stilian Kirov
Gibb Music Director and Conductor
Christina Salerno
Executive Director
Ken Churilla
Marketing & Communications Director
Roosevelt Griffin III, Ed. D.
Education and Community Engagement Director
Trish Halpin
Office Manager and Box Office Manager
Catharine Walby
Development Director
Savanna Cardenas
Operations Manager
Brian Ostrega
Librarian
Phillip Serna
Personnel Manager

CONDUCTOR LAUREATE

Carmon DeLeone

ADMINISTRATIVE OFFICE

377 Artists Walk
Park Forest, IL 60466
Phone (708) 481-7774
Fax (708) 481-7998
IPOMUSIC.ORG

VENUE

Ozinga Chapel at
Trinity Christian College
6601 W. College Drive
Palos Heights, IL

MEET THE MUSICIAN



**BRIAN GOODWIN,
HORN**

How long have you been playing music?

I started playing horn when I was ten, but I was in a children's choir

before that. Both of my parents sang when I was growing up and I can hardly remember a time when I wasn't singing or whistling too.

What instruments do you play, other than what you play in IPO?

Wagner tuba is the auxiliary instrument for horn players; it doesn't get called for very often but I have spent quite a few concerts on Wagner tuba. In addition to horn, I played trumpet all through middle and high school. I'm pretty useless on piano (the semesters of required piano instruction in college didn't help much). I started playing classical guitar a few years ago for fun, however I play at a very novice level.

How gratifying is it to be able to have a career as a professional musician?

I consider myself extremely fortunate to have a career as a musician. Of the people I went to school with, I am one of the only ones who is still making a living as a professional musician, and I wouldn't want to do anything else. I have become colleagues with former teachers and mentors, played concerts with my musical heroes, traveled around the world, and even lived abroad—all thanks to music. I can't even begin to explain how lucky I feel.

Who has been the most significant

influence on your musical career? This is a very difficult question to answer, and not just because there have been so many people that have had an impact on my musical journey. I have found that influences often lead to and overlap with others, like ripples in water. For example, my theory teacher in undergrad had an infectious enthusiasm for Wagner's music that led me down a rabbit hole that I've never come out of! At the same time, I was studying with a member of the Metropolitan Opera Orchestra who had a standing offer for opera tickets—I went to eight operas my first semester and still love performing and attending opera. Both of these people undoubtedly had a hand in cultivating my love of opera.

If I really had to choose, I would have a hard time thinking of someone who has influenced my career more than my teacher in grad school, principal horn of the Lyric Opera, Jon Boen. He not only helped with my technical and musical development, but also provided me with invaluable personal and career advice. I'm sure my career would not have unfolded the way it has without his guidance.

What is one of your favorite IPO

memories? Probably my most enjoyable concert was from the 2018–2019 season. We played a program with Strauss's *Der Rosenkavalier Suite*, *Till Eulenspiegel*, and the *Four Last Songs*. These are all masterpieces by one of my favorite composers with absolutely wonderful horn writing—what a treat!

IPO CONCERT ROSTER

FIRST VIOLIN

Stephane Collopy,
acting concertmaster
Elizabeth Choi,
acting assistant
concertmaster
Dan Galat
Cathryn Cowell
Julia Evans
Abigail Schneider
Katie Klocke
Songhea Sackrider

SECOND VIOLIN

Brian Ostrega,
acting principal
Linda Lager,
acting assistant principal
Viktor Jan Kuru
Aasheeta Parikh
Amanda Beaune
Cecelia Ostapeck

VIOLA

David Beytas,
acting principal
Timothy Hoorelbeck,
acting assistant principal
Daniel Golden
Megan Yeung

CELLO

Lisa Bressler,
acting principal
Andrew Snow,
acting assistant principal
Emily Lewis Mantell
Abigail Monroe
Lindsey Sharpe
Kelly Quesada

BASS

Jake Platt,
principal
Nicholas DeLaurentis,
assistant principal
Phillip W. Serna

FLUTE

Cynthia Fudala,
principal
Beth Bryngelson
Claudia Cryer

OBOE

Ricardo Castañeda,
acting principal
Adam DeSorgo

CLARINET

Claire Werling,
acting principal
Andrea R. DiOrio
Anna Najoom

BASSOON

Erin Kozakis,
principal
Matthew Hogan

HORN

Lee Shirer,
principal
Elizabeth Mazur-Johnson
Amy Kruger

TRUMPET

R. Matthew Lee,
principal
Greg Fudala
Kevin Wood

TROMBONE

Serdar Sizmec, *principal*
Tom Stark
Sean Yeung

TUBA

Matthew Gaunt,
acting principal

TIMPANI

Simón Gómez Gallego,
principal

PERCUSSION

Christian Hughes,
acting principal
Alex Chao
Boyan Tantchev

KEYBOARD

Marianne Parker

HARP

Emily Melendes

Visit **IPOMUSIC.ORG** for the full IPO roster.

CHAIR SPONSORS

The Illinois Philharmonic Orchestra extends a heartfelt thank you and recognizes the following principal chair sponsors for their extraordinary support of outstanding musicians and artistic excellence. For more information about principal chair or musician sponsorship and availability for chairs not listed here, contact Executive Director Christina Salerno at 708-481-7774 or csalerno@ipomusic.org.

Azusa Tashiro,
Concertmaster
Lois and Stanley Birer

Elizabeth Huffman,
Assistant Concertmaster
Stacy and Jim Holland

Linda Veleckis,
Principal Second Violin
Linda D. and Craig C. Grannon

Rebecca Swan,
Principal Viola
Gerhard Haigis

Jacob Hanegan,
Principal Cello
Brian and Carolee Samuels

Jake Platt,
Principal Bass
Billie and Henry Hauser

Cindy Fudala,
Principal Flute
Dr. Jerri E. Greer

Naomi Bensdorf Frisch,
Principal Oboe
Shantha Sreekanth

Trevor O'Riordan,
Principal Clarinet
Leonard Achtenberg and
Steven Livesey

Erin Kozakis,
Principal Bassoon
Dr. Mel and Mrs. Janet Muchnik

Lee Shirer,
Principal Horn
Barbara Sturges

R. Matthew Lee,
Principal Trumpet
Richard and Andrea Gibb

Sean Whitaker,
Principal Tuba
Dr. Michael Rogers

Jon Johnson,
Principal Percussion
Kathleen Field Orr

Marilyn Bourgeois,
Principal Piano
Donnell and Jeanne Schwarz

Eleanor Kirk,
Principal Harp
Patti and John Flanagan

A SINCERE THANK YOU

The Illinois Philharmonic Orchestra gratefully acknowledges the following annual fund and in-kind gifts made by individuals between June 1, 2022– May 31, 2023. You may join this list of generous donors by mailing your tax-deductible contribution to the Illinois Philharmonic Orchestra, 377 Artists Walk, Park Forest, IL 60466 or by donating online at www.ipomusic.org.

PRINCIPAL CHAIR'S CIRCLE (\$5,000+)

Anonymous
Leonard Achtenberg and
Steven Livesey
Esthel B. Allen
Charles and Marie Grass
Amenta
Stephen Baker
Lois and Stanley Birer
Timothy and Theresa Coburn
John and Patti Flanagan
Richard and Andrea Gibb
Linda D. and Craig C. Grannon
Jerri E. Greer
Gerhard Haigis
Fred and Judith Hanzelin
Billie and Henry Hauser
Stacy and Jim Holland
Kathleen Field Orr
Carol Roberts
Michael Rogers
Carolee and Brian Samuels
Donnell and Jeanne Schwarz
Shantha Sreekanth
Barbara Sturges
Donna Van Eekeren and
Dale Connelly
John and Cindy Westerman
Steven and Jane Winger

MUSICIAN'S CIRCLE (\$2,500+)

Anonymous
Helen Bell
Joey and Stephen Buck
Richard and Ellen Davis
William and Janet Donne
Paul and Pat Greenawalt

Andrea Hetzel
William and Maryellen Hofmann
Michael and Jacqueline Lewis
Terry J. Medhurst
Mel and Janet Muchnik
Don and Pat Ransford
Marilynn Tannebaum
Bruce and Lynn Werth
Terri Winfree

ENSEMBLE CIRCLE (\$1,500+)

Janice Barry
Sam and Marva Brown
Christie Buralli
Jon and Jodi Gosse
Perry and Karen Hoag
Nichole and Marty Patton
Donica and Ben Van Voorhees

SYMPHONY CIRCLE (\$1,000+)

Janet and Barry Bolton
Carole Brejcha
Richard and Virginia Burd
Elisabeth Glascoff
Therese Goodrich
Carol Henry
Kevin and Julie Justie
Patrick and Susan Ormsby
Robert and Pamela Rodey
Christina Salerno and
Ross Sweeney
Ric and Ann Smies
Wade and Terese Thrall

PRELUDE CIRCLE (\$250+)


Anonymous
Tim and Connie Borchert
Cheri Boublis

Efren Cantu
Penny Chamberlain
Christine Cochrane
Sharon Cooper
Frank Corral
Gerald Dagenais
Mary G. Deegan
Craig and Janet Duchossois
Verena Ellenberg
Walter and Sis Flor
Mary Flynn
Rachel Gilmore
Joseph Gonzales
Roosevelt Griffin III*

Sally Grossi
Thomas Hawkins
Kenneth and Louise Hawkley
Lana Hileman
David and Carol Hilvers
Robert and Jane Hindsley
Mary Hoag*

Corinne Hwang
Marie lafollo
Al and Pat Jackson*
Michael and Marion Johnson
Joyce Lagestee
Valerie Litchfield
Elizabeth Lloyd
Colette and John Loecke
Dory and Larry Machtinger
Myrtle Martin
Pam and John McDonald
Verna McQuown
Suzanne Mitts
Valerie Nicholson and
Steven Jacobson
John Novosel
Mary Olsen
James and Sharon Presse

**Congratulations on your 46th Season
of bringing us Beautiful Music!**



Deborah Okleshen
Flossmoor / Orland Park
deborah.okleshen@bairdwarner.com
Mobile: 708-821-0128



BAIRD & WARNER

*Your Real Estate Specialists
in the Southern Suburbs*



Rita Starkey
Frankfort
rita.starkey@bairdwarner.com
Mobile: 708-606-9064

A SINCERE THANK YOU *continued*

Ron Primack
Margo Rannells
Patricia Schanaberger
Paul and Susan Schlesinger
Bonnie Schroat
Richard and Cres Schultz
Jackie and Jeff Seeman
Richard and Margaret Skurka
Jim and Amber Steinmetz
Jeff Stevenson
Marcia Steward
Maryellen Tomassetti
Brian and Lois Toolan
Katherine and Kenneth Veach
Karen and Jerry Vrshek
Arlene and Al Wagner
Bill and Audrey Wesender
Dick and Sue Wren

INTERMEZZO CIRCLE (\$100+)

Eugene and Helen Benes
Norinne Benes
Marilyn Bourgeois
Lauren F. Broj
Rex and Dot Brown
Montie Buckle
Icy Cade-Bell
Gary Casper
Mort and Jane Castle
Ronald Centanni
Alfred Corbett
Mary R. Cripe
Diana Cruz
Mary and Brad Dankowski
Robert and Barbara DeBolt
Anne Downey
Sally DuBois
Dennis and Margaret Duzinski
Don Edgren and Linda Wright
Sarah Ellsworth
Martha Fahey
Brendan and Rosemarie Foley
Wayne J. and Bobett Garrett
Evelyn Gauditis
Lois Glasgow
Elke Godwin

Howard and Barbara Gordon
Lynda V Grant*
Dorothy Hagestad
Trish Halpin
Valerie Hammer
Zenaida P. Harry
Pam Heim
Tenner Hemphill
Michael Hoffman*
Thelma Hoogland*
Judith and Bradford Johnstone
Douglas and Diane King
Thomas and Judith Kinney
John and Rosalind Knox*
Karen Kramer
Fred and Janet Kuester
John and Mariann Kwinn
James Lambur
Nekia Lang
Carol Lesh*
Jack Levitt
Rudolph and Elizabeth Loher
Mary Lubertozzi
Elaine and Charles MacKenzie
Judith McGee
Michele Medhurst and
Jeffrey Fortman
Judy Mitchell
Margaret Moutvic-Wasz
Michelle and Cameron Nelson
Karen Odonnell*
Geraldyn Oesterreicher*
Rose Olsar
Trevor O'Riordan*
Steven and Melissa Paar
Amy Pelletiere
Doug Peterson*
Richard and Barbara Pizza
Tom and Debbie Powers
Vivian Purnell
Helen Rachford
Andrea Ramirez-Justin &
Robert Justin*
David and Brenda Rice
Dorothy Rog
Evelyn Rosen
Heidi and Jeff Ruhe

Tom and Kim Sifner*
Steve Sifner*
Joyce Sligar
Judith Smith
Jacqueline Spillman
Carolyn Stamets
Richard and Annette Steinke
Kathi Sterling
Charlene Swanson
Joseph and Marilyn Tapajna
John and Linda Ugo
William Uher*
Kamen Vatchev*
John Voigt
John and Barbara Wayne
David and Loretta Whitney
Walt and Diane Wille
John Yast
Ed and Emily Zabrocki
Kristie Ziegler

ORCHESTRA CIRCLE (\$50+)

Jim Adams
Barbara Amelio
Rosemarie Arakelian
Miki Barry*
Ronald and Sharon Bean
John and Evonne Blakey*
Karen Carlyle
Peter and Anna Maria Corsetti
Mary Jo Cronin
Beverley Deptolla
Michael and Leslie Devore
William and Jan Doran
Tom Doran
Charles Eckel*
Frank and Laurie Fleischer
Jim Fricke*
Karen Goodgold
Douglas and Robyn Graves
Cathy Hartney
Martha Hesse
Sakhawat and Ann Hussain
Dianne Jedlicka
Mary Kaplan
Peter Kohn

Michael Krukones
Anne Marie Leofanti
Berle and Rita Littmann
Darlene Long
Randy and Sharon Madderom
Emily Lewis Mantell
Cecilia Murnighan
Carol and Wayne Muskiewicz
Nina Nilsson*
Gayle Orlando
Leann and Grace Passolano*

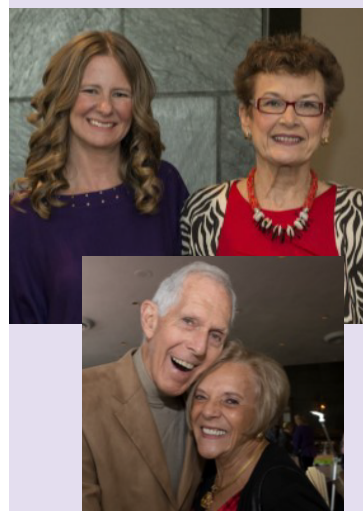
Loretta Piunti*
Joyce Rheinheimer*
Stephen and Patricia
Rinkenberger
William Rowe
John and Joanne Sarros
Mary Semik*
Harry Sherrill
George Streeter and
Kristina Howard
Margaret Sumrall

Don Tedeschi
Marilyn and Don Thomas
Mary Ann Trzyna*
Bernadette and Don Turner*
Linda Wagner
Sally Wallach
William Wilschke
Gloria Ziolkowski

**denotes first-time donor*



"I joined the Friends of the IPO because of the unique opportunity to support the orchestra and its mission to bring music to young people and to the Southland community. Membership in the Friends connects us with others who share our love of music and enjoy creating special programs and events in partnership with the orchestra." – Pamela McDonald



The Friends of the IPO is a dedicated group of extraordinary volunteers committed to sustaining IPO—the only professional orchestra based in the Chicago Southland. In addition to fundraisers and other social and community events, we showcase young South Suburban musicians in our Rising Star Showcase each spring, host an annual Symphony of Style fall fashion show and luncheon, and provide hospitality for the orchestra throughout the season. Individual membership is \$30, and a Family membership is \$45 annually. For more information about Friends of the IPO, call (708) 481-7774.

Thank you so much to the Friends of IPO for all of your support!

Come Alive!
IN PALOS HEIGHTS



Welcome to Palos Heights!

On behalf of the City of Palos Heights, I want to thank you for your support of the Illinois Philharmonic Orchestra and welcome you to the beautiful Ozinga Chapel on the campus of Trinity Christian College.

While you are here, I hope you will explore all that our city has to offer. From the peace and serenity of Lake Katherine to our many outstanding retail shops and restaurants, there are many ways to experience all the amenities and come alive in Palos Heights.

Finally, I want to thank the Illinois Philharmonic Orchestra for enhancing our commitment to the arts by bringing live classical music to our community. I know you will enjoy the concert and I hope you will visit us again soon.

Sincerely,

Robert S. Straz
Mayor



www.palosheights.org

CZECH REPUBLIC
SLOVAKIA
AUSTRIA
HUNGARY

ESKÝ KRUMLOV
WEISSENKIRCHEN
DÜRNSTEIN
KLOSTERNEUBURG
BRATISLAVA
VIENNA
LINZ
MELK
AUSTRIAN LAKE DISTRICT

Danube

Come Sail With Me
Melodies of the Danube
On The AMA Sonata

COUNTRIES: Austria, Germany, Hungary, Slovakia
RIVERS: Danube

Meg Sakka
Owner/President
(708) 336-8422
meg@magnificenttravel.com
MEGnificentTravel.com

Special Group Pricing and Amenities Journey along the Danube River.
October 2, 2024

Magnificent Travel

See firsthand why this storied river has inspired generations of artists, poets and musicians. Indulge your passion for timeless architecture and art in three magnificent capitals: Budapest, Bratislava and Vienna. Let the hills come alive with the sounds of music in Salzburg and the Austrian Lake District. Cruise the enchanting Strudengau Valley and let the melodies of the Danube carry you on a regal journey through time.

BALLET 5:8

Beyond THE NUTCRACKER

Dec 16 | 2pm & 7pm
Dec 17 | 3pm

ballet58.org
312.725.4752
Lincoln-Way East Performing Arts Center

IPO DINE

Thank you to our IPO Restaurants Sponsors

Present your concert tickets on concert night at these participating restaurants and receive 15% off

**Discount applies to food only *Reservations Recommended*

In order to best serve you and allow you to be at the concert on time, restaurants recommend reservations a minimum of 2.5 hours prior to the start of the concert

Capri
Ristorante Italiano

Zachary's



LA VOÛTE
bistro-bar

**MAKE A MOVE IN THE
RIGHT DIRECTION**

**TAKE CONTROL OF YOUR
FINANCIAL FUTURE**

NICK MARKIONNI CFP®, CFS, MBA
OWNER & FINANCIAL ADVISOR



815/534-5155 WWW.AFCADVISORY.COM WWW.LINKEDIN.COM/IN/NMARKIONNI

Nicholas F. Markionni offers securities, advisory, and insurance services through Royal Alliance Associates, Inc., Member FINRA/SIPC and a Registered Investment Advisor. Additional insurance services offered through Anthonisen Financial Corporation. Additional investment advisory services offered through Focus Financial Network, Inc., a Registered Investment Advisor. Entities listed are not affiliated with Royal Alliance Associates, Inc. AFC Financial Advisory Group is a marketing designation.

Come taste why we've
been a local favorite for
more than 20 years.
Serving authentic
Italian cuisine



Located just 5 minutes from
Ozinga Chapel

Reservations
recommended

**IPO Dine Offer: Take 15% off the food portion of your bill on concert
nights when you show your IPO ticket**

12307 S. Harlem Ave, Palos Heights | 708-671-1657 | eatatcapri.com

15% OFF ENTRÉE ON CONCERT NIGHT WITH IPO TICKETS



Harvest Room

farm-to-table

Breakfast • Lunch • Dinner
From Scratch • Vegan/GF • Craft Bar

Reservations recommended
127th & Harlem • Palos Heights • 708.671.8905

LA VOÛTE

*Midwestern Fare.
French Essence.*

ENJOY 15% OFF YOUR MEAL ON CONCERT NIGHTS

*Must present your IPO concert ticket to redeem. Discount applies to food only.

708.798.6000 LAVOUTEBISTRO.COM 2034 RIDGE ROAD, HOMEWOOD, IL 60430

Zachary's

A neighborhood bar that celebrates
craft beer and craft bar food

**IPO Dine Offer: Take 15% off the food portion of your bill on
concert nights when you show your IPO ticket**

13415 S. Ridgeland, Palos Heights | 708-385-8814 | zacharysgrill.com



Kathleen Field Orr

**OTTOSEN DINOLFO HASENBALG
& CASTALDO, LTD.**

Proudly supports the work of the
Illinois Philharmonic Orchestra
and wishes the IPO a successful season!

Specializing in municipal law

2024 Hickory Road
Homewood, IL 60430
312.382.2113 | kfo@ottosenlaw.com

ottosenlaw.com



*The Tall Grass Arts Association
has been making fine art a part of life in the south
and southwest suburbs for more than 50 years.
It promotes public education and appreciation of the arts,
encourages artists and supports fine art through
exhibits, sales, classes and special events.*

**Tall Grass Arts Association Gallery and Gift Shop
at 367 Artists Walk**

Open Tues. – Sat., 11:00 a.m. – 4:00 p.m.

**The Tall Grass Art School at 70 Lester Road
in DownTown Park Forest**

Gallery and School: (708) 748-3377

Call for hours and special event information.

CAN'T AFFORD NEW WINDOWS, DOORS, SIDING, GUTTERS, OR AWNINGS?

Uhlmann Home Improvements can **SOLVE your **PROBLEMS**.
We will **REPAIR** your Windows, Entry Doors, Storm Doors,
Patio Doors, Siding, Gutters & Awnings**

Replacement Windows • Storm Doors & Windows • Gutters • Gutter Guards •
Siding Bows, Bays & Garden Windows • Custom Shutters • Patio Doors • Awnings •
Steel/Fiberglass Entry Doors • Glass Block Windows • Cleaning & Sealing Gutters



Family Owned ... Since 1945

**We Offer
Senior
Discounts**

**VOTED BEST FOR HOME IMPROVEMENT
in the Chicago Southland 8 Years in a Row**

**CALL Today for Your
FREE In-Home Estimate
773-238-1829**

**www.uhlmanninc.com
11636 S. Pulaski • Alsip**

ILLINOIS PHILHARMONIC ORCHESTRA

DECEMBER 09, 2023 | 3 PM

Stilian Kirov, *Conductor*

Chicago Community Chorus, Dr. Keith Hampton, *Artistic Director/Founder*

Jodette Adams, Drea Gallaga, Gail James, Teniya Mackey, Jaclyn Miller, Caroline Saries,

Solo Vocalists on Hail Mary!

Spectrum Youth Singers, Oksana Rodak, *Artistic Director*

Merry Christmas, Merry Christmas	John Williams (b. 1932)
I wish you Christmas	John Rutter (b. 1945)
'Twas the Night Before Christmas (arr. Ken Darby and Harry Simeone)	Traditional
Concerto grosso, op. 6, no. 8, G minor (Christmas Concerto)	Arcangelo Corelli (1653–1713)
Adagio – Allegro – Adagio	
Hark! The Herald Angels Sing (arr. Mack Wilberg)	Felix Mendelssohn (1809–1847)
A Soulful Christmas Suite	Sam Shoup
Somewhere in my Memory	John Williams (b. 1932)
'Hallelujah' Chorus from <i>Messiah</i>	George Frideric Handel (1685–1759)

INTERMISSION

Sleigh Ride	Leroy Anderson (1908–1975)
Star of Bethlehem	John Williams (b. 1932)
'Farandole' from <i>L'Arlesienne Suite No. 2</i>	Georges Bizet (1838–1875)
Hail Mary!	William L. Dawson (1899–1990)
A Klezmer Nutcracker	Sam Shoup
Still, Still Night (arr. Jackson Berkey)	Franz Gruber (1787–1863)
A Christmas Festival	Leroy Anderson (1908–1975)

Presenting sponsor 

Chicago Community Chorus sponsored
by Richard and Andrea Gibb

Opening Act Youth Lobby Performers and Special Guests

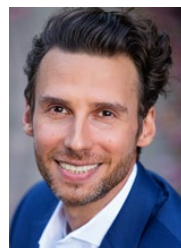
Spectrum Youth Singers, Plainfield

SpectrumSingersChicagoland.org

Contact: Artistic Director, Oksana Rodak at Gpchildrenschoir@gmail.com / 779.279.6520



This program is partially supported by a grant from the Illinois Arts Council Agency.



STILIAN KIROV,

Gibb Music Director

Currently in his seventh season as the newly retitled Gibb Music Director of the Illinois Philharmonic, Maestro Stilian Kirov is the First

Prize Winner of the "Debut Berlin" Concert Competition, prizewinner at Denmark's 2015 Malko Competition, as well as the 2010 Mitropoulos Competition. Maestro Kirov has made his conducting debut at the Berlin Philharmonie in 2017 and is also a recipient of numerous Solti Foundation U.S. Career Assistance Awards (2016–2019).

Highlights of Mr. Kirov's guest performances include appearances worldwide with the Seattle Symphony, Israel Camerata, Xi'an Symphony, Minas Gerais Philharmonic Orchestra, Sofia Philharmonic, Leopold Chamber Orchestra/Ukraine, Orchestra of Colors/Athens, Orchestre Colonne/Paris, Sofia Festival Orchestra, State Hermitage Orchestra/St. Petersburg, Thüringen Philharmonic Orchestra, the Zagreb Philharmonic, the Musical Olympus International Festival in St. Petersburg, Victoria Symphony/British Columbia, Omaha Symphony and the Memphis Symphony, among others.

Stilian Kirov assisted distinguished conductors such as Bernard Haitink with the Chicago Symphony Orchestra, as well as Stéphane Denève, the late Rafael Frühbeck de Burgos, Christoph von Dohnányi, and Andrew Davis, all with the Boston Symphony Orchestra.

Mr. Kirov is a graduate of The Juilliard School's orchestral conducting program, where he was a student of the late James

DePreist. He has also studied with the late Kurt Masur, Michael Tilson Thomas, the late Gianluigi Gelmetti, George Manahan, Robert Spano and Asher Fisch, among others.

Also a gifted pianist, Stilian Kirov was Gold Medalist of the 2001 Claude Kahn International Piano Competition in Paris.

The CHICAGO COMMUNITY CHORUS

(CCC) is Chicago's premier choral ensemble whose membership and repertoire reflect the rich diversity that is Chicago. Performing the works of the great classical composers to the music of contemporary songwriters, the Chicago Community Chorus has appeared everywhere from Chicago's renowned concert halls to small local venues.

Our mission is to provide advanced music education and performance opportunities to everybody who loves to sing by providing an experience that is musically versatile, culturally diverse and mutually supportive.

We are committed to:

- Providing advanced choral music education and performance opportunities to anyone who loves to sing regardless of musical experience, education, background or ability without an audition requirement
- Reflecting the diversity that is uniquely Chicago in both our membership and our repertoire
- Actively and intentionally recruiting people from all walks of life, of diverse backgrounds and varying musical abilities who love to sing
- Providing an opportunity for a diverse and multicultural choral experience, making the Chicago Community Chorus experience accessible to wide

- constituency by providing rehearsal locations throughout the city
- Seeking and creating joint musical ventures with other artists and musical organizations that will enhance the diversity of music and culture for our members and our audiences
- Being responsive to our members' evolving musical needs
- Developing solo, small and large vocal ensemble opportunities which offer the ability to specialize in specific genres such as gospel or chamber music
- Supporting music performances throughout the city either actively as singers or passively as audience participants



DR. KEITH T. HAMPTON, affectionately known as "Doc," is the Founder and Artistic Director of the Chicago Community Chorus (CCC). In addition, Dr. Hampton is an organ performer, conductor,

composer, educator, church musician, adjudicator and workshop clinician. He is president of Dr. KT Productions, Inc., Chicago, Illinois and serves as the Director of Music/Organist at St. Thomas Episcopal Church. Classically trained as an organist and conductor, he has served as Music Director/organist-choir director of Hillcrest Baptist Church in Country Club Hills, Illinois; Wesley United Methodist Church, Aurora, Illinois; Bryn Mawr Community Church; Congregational Church of Park Manor; Park Manor Christian Church, and Assistant Director of Music at Trinity United Church of Christ, all in Chicago.

A specialist in the field of Gospel Music, the North Central American Choral Directors Association in 2010 selected

Dr. Keith Hampton as one of the top 25 Contemporary Composers "whose composition, Praise His Holy Name, should be standard repertoire for choirs today and for the next 25 years." Dr. Hampton has guest conducted the, ACDA Eastern Division High School Honors Choir, Alabama All State Junior High School Honors Chorus, Baltimore All County High School, Georgia All State Collegiate Chorus, Ithaca College Gospel Festival, Oklahoma All State Junior High School Honors Choir, Rhode Island All State Chorus, Virginia All State Honors Choir, Wisconsin All State Middle Level Chorus and District Choruses in Illinois, Pennsylvania, Virginia and Wisconsin. Keith Hampton earned a Bachelor of Music Education Degree from Westminster Choir College, a Master of Arts Degree from Marywood University and a Doctor of Music Degree in Church Music from Northwestern University.

Dr. Hampton has been awarded the Service Playing, Choir Master and Associate certificates from the American Guild of Organists. Dr. Hampton was twice chosen as one of 14 Conductors to participate in the Oregon Bach Festival Conducting Master Classes. The festival is held at the University of Oregon under the direction of Helmuth Rilling and Thomas Somerville. He also was chosen to conduct in an A Cappella Music workshop sponsored by Chorus America. At Dr. KT Productions, Inc., Keith provides music transcriptions of Black Gospel Music with the use of Finale by Make Music. He produced the CD, "Celebrate", in 2009, and published the book, *Praise His Holy Name ... And Other Songs in the Gospel Style*, in 2011. In 2012, Dr. Hampton produced two organ CDs, *Organ Masterworks, Volume I* and *French Organ Music, Volume II*. As a published composer, Dr. Hampton's arrangements of Spirituals and Gospel Songs are available through Augsburg

Fortress Press, Choristers Guild, earthsongs Publications, Hal Leonard Corporation, Hinshaw Music, and Dr. KT Productions, Inc.

SPECTRUM YOUTH SINGERS (SYS) is excited to be entering its 8th season bringing choral music to young singers in grades 3–12. SYS offers group vocal instruction, individual and small group vocal coaching, and performance opportunities. SYS helps children of all abilities find their voice, grow and have fun while singing great music. We believe that if a child can speak, they can sing! Our choral rehearsals provide a stimulating and nurturing environment where every singer can grow musically, intellectually and personally. An audition is required for our main groups which meet on Tuesday evenings. Our program is supplemented with individualized online classes in musicianship and vocal technique. There are two flagship concerts per year and unique performance opportunities. The goal is joyous singing!



As a music educator and choral conductor, **OKSANA RODAK** has worked in Canada, the United States and Europe. Oksana is a graduate of the University of Toronto where she

received her Bachelor and Master of Music degrees studying with Dr. Doreen Rao. She obtained a Certificate in Piano Performance from the Royal Conservatory of Music in Toronto, and studied choral conducting, piano, voice and bandura at the Tchaikovsky National Music Academy of Ukraine. She has been awarded the Artist-Teacher and Master-Teacher Diploma from the CME Institute for Choral Teacher Education. Oksana has held positions as Artistic Director of the Cantate Children's Choir, Conductor with Anima—the Glen Ellyn Children's Chorus, and Coordinator of Children's Music at the Fourth Presbyterian Church of Chicago. She has served as Artistic Director of Young Naperville Singers where she founded the Boys Choir, the Boys Power Sing, and under her directorship, the choir premiered at Chicago's Orchestra Hall, performed at an American Choral Director's Association Convention and began touring internationally. Oksana Rodak is the winner of the Glenn Gould Memorial Scholarship and Leslie Bell Conducting Prize. Oksana's passion is working with young singers and guiding them to find their true voice. She believes that ordinary children can achieve extraordinary levels of musicianship. In the pursuit of excellence, she helps her singers nurture not only their musical development but also their self-knowledge, self-esteem and confidence.

Subscribe ...



... and support local news

News you can't get
anywhere else

HOMWOOD – FLOSSMOOR
CHRONICLE

“RUTTER, I WISH YOU CHRISTMAS” LYRICS

I wish you starlight on fields of snow
The winter's morning light and evening's glow
I wish you candles that shine from every tree
So all the world can see
The light that there could be
I wish you music, I wish you song
With voices echoing, joyous and strong
I wish you church bells, ringing true and clear
I wish you Christmas, a merry Christmas
A Merry Christmas to remember all the year
Old friends smiling
Thinking of times gone by
Young friends laughing
Christmas is here
Spirits are bright
And hopes are high
I wish you loved ones around your fire
May Christmas bring you all your heart's desire
I wish you children to make the season new
With dreams you help come true
Just like it was for you
I wish you blessings, I wish you love
The sound of angel choirs from high above
I wish you laughter, happiness and cheer
I wish you Christmas, a Merry Christmas
And may its joy and peace be with you through the year
I wish you music, I wish you song
I wish you harmony your whole life long
The warmth of memories that long remain
And my God bless you 'till we all shall meet again

**WISHING YOU A
SUCCESSFUL
2023/24 SEASON**

**ILLINOIS
PHILHARMONIC
ORCHESTRA**

Don & Pat Ransford

Proud supporters of the IPO



2024
Rising Star Showcase

The Rising Star Showcase offers performance ready high school students from Chicago's South Suburbs an incredible performance opportunity.

Past IPO Rising Stars have gone on to great musical success, with many securing collegiate music scholarships. A notable number of Rising Stars have also become accomplished professional musicians after participating in the program.

DEADLINE FOR SUBMISSIONS: FEBRUARY 5, 2024
For more information and submission instructions go to IPOmusic.org/rising-star-showcase

Sponsored by

Friends of the IPO

NATHAN MANILOW THEATRE
at **FREEDOM HALL**

410 Lakewood Blvd / Park Forest, IL 60466
708.747.0580 / www.freedomhall.org

2023-24 NMT CONCERT SERIES
Highlights include:
MASTERS OF SOUL JOHNNY MATHIS CHRISTMAS
TERISA GRIFFIN BEST OF BROADWAY

Freedom Hall Nathan Manilow Theatre is an intimate Chicago suburbs concert venue and performing arts theatre located in Park Forest, Illinois. We are thrilled to present LIVE music in our Nathan Manilow theatre!

Freedom Hall acknowledges support from the Illinois Arts Council Agency

Free Family Concerts 2023-24



A Mass for Troubled Times

MAY 19, 2024, 4PM

All Souls Parish

3010 Ridge Rd

Lansing, IL 60438

JUNE 2, 2024, 4PM

St. John the Evangelist

10701 Olcott Ave

St. John, IN 46373



For more information,
scan the QR code

SouthHollandMasterChorale.org

CameliHoag

Attorneys at Law

**Personal Injury • Construction • Insurance Coverage
Commercial • Fire & Casualty**

CameliHoagLaw.com • (312) 726-7300

SOUTHLAND ARTS



IPO is a proud member of Southland Arts

Southland Arts, is an economic and community development organization. Its mission is to build stronger communities, neighborhoods, and economies by uniting wide-ranging cultural resources with an expanding business community to enrich the lives of the diverse population of Chicago's southern suburbs.

For more information please contact Jeff Stevenson at jstevenson@govst.edu

ENCORE SOCIETY

The Encore Society of Illinois Philharmonic Orchestra provides a meaningful way for us to recognize the generosity of those who have made planned gift commitments through IPO to benefit our community with a lasting musical legacy. We offer our most sincere thanks to the special individuals listed below, and to our many other friends who wish to remain anonymous, for their thoughtfulness and support.

Charles and Marie Grass Amenta

Lois Anthonisen*

Stephen Baker

Lois and Stan Birer

Carole Brechja

Joey and Steve Buck

Ronald Centanni

Carmon DeLeone

Peg and Jack Donohue

Dick and Andrea Gibb

Linda D. and Craig C. Grannon

Jerri E. Greer

Billie and Henry Hauser

Andrea Hetzel

Maryellen and William Hofmann

Frank Leon Johnson*

Donna J. Kosinski*

Dr. and Mrs. Richard Moutvic*

Mel and Janet Muchnik

Kathleen Field Orr

Don and Pat Ransford

Michael Rogers

Brian and Carolee Samuels

Al and Barbara Sturges

Marilynn Tannebaum

Ben and Donica Van Voorhees

You can create a lasting legacy through Illinois Philharmonic Orchestra utilizing a will, living trust, charitable remainder trust, charitable gift annuity, insurance policy, qualified retirement plan or other appreciable assets. Our role is to receive, administer and provide ongoing stewardship of your planned gift to ensure that your intentions are honored.

For more information about how you can make a planned gift to IPO, please contact Executive Director, Christina Salerno at 708-481-7774 or csalerno@ipomusic.org

*IPO gratefully acknowledges these legacy gifts to IPO through the Encore Society.



\$5.1 MILLION CAMPAIGN FOR THE FUTURE

THE VISION

Inspired by a generous investment from The Davee Foundation, IPO is empowered to create a Bold Vision for our Future:

- FORTIFY IPO AS THE PREMIERE PROVIDER of classical music and cross-over arts experiences in the Southland
- INVEST IN IPO'S REGIONAL IMPACT through expansion and innovation
- ADVANCE IPO'S ENGAGEMENT WITH OUR COMMUNITY through multi-tiered educational partnerships
- BECOME THE ORCHESTRA OF OUR COMMUNITY through broadening and deepening equity, diversity, and inclusion initiatives

IPO THANKS OUR CAMPAIGN FOR THE FUTURE DONORS *Pledges and gifts to date*

Anonymous
Charles Amenta and Marie Grass Amenta
Stephen and Betty Baker
Jerry and Mary Lou Barshay
Janice Barry
Julie Bernstein
Stanley and Lois Birer
Carole Brejcha
Sam and Marva Brown
Joey and Stephen Buck
Christie Buralli
Timothy and Theresa Coburn
Christine Cochrane
Frank Corral
Richard and Ellen Davis
Suzanne and Harry Davis
Mary Deegan
Janet and William Donne
Craig and Janet Duchossois
Brendan and Rosemarie Foley
Richard and Andrea Gibb
Linda D. and Craig C. Grannon

Paul and Pat Greenawalt
Jerri E. Greer
Gerhard Haigis
Zenaïda P. Harry
Henry and Billie Hauser
Patricia Henaghan
Andrea Hetzel
Karen and Perry Hoag
William and Maryellen Hofmann
Holland for Mayor
Jim and Stacy Holland
Corinne Hwang
Fred and Janet Kuester
Jack Levitt
Dory and Larry Machtinger
Chasidee Magana
Cookie Marks
Terry Medhurst
Richard Moutvic
Mel and Janet Muchnik
Kathleen Field Orr
Nichole and Marty Patton
Don and Pat Ransford

Michael Rogers
Arthur and Phyllis Salerno
Brian and Carolee Samuels
Donnell and Jeanne Schwarz
Shantha Sreekanth
Marcia Steward
Barbara Sturges
Lisa Tannebaum and Donald Brownstein
Marilynn Tannebaum
Ross and Isabel Tannebaum
Marilyn Thomas
Donica and Benjamin Van Voorhees
Natalie Venezia
Bruce and Lynn Werth
John and Cynthia Westerman
Kenneth Williams and Marcia Meggs
Terri Winfree
Steven and Jane Winger
Edward and Emily Zabrocki

\$4.89 MILLION RAISED TO DATE IN GIFTS AND PLEDGES



THOSE WHO MAKE A DIFFERENCE

The Illinois Philharmonic Orchestra extends a special thank you to the following individuals and organizations that support the orchestra through gifts of goods and/or services. The following recognizes generous in-kind contributions received between June 1, 2022 – May 31, 2023.

INDIVIDUALS WHO MAKE A DIFFERENCE

Anonymous
Charles Amenta and Marie Grass Amenta
Marilyn Bourgeois
Carole Brejcha
Joey and Stephen Buck
Christine Cochrane
Richard and Ellen Davis
William and Janet Donne
Richard and Andrea Gibb
Linda D. and Craig C. Grannon
Paul and Pat Greenawalt
Jerri E. Greer
Andrea Hetzel
Lana Hileman
Karen and Perry Hoag
Mary J. Hoag
William and Maryellen Hofmann
Stacy and Jim Holland
Stilian Kirov
Trevor O'Riordan
Doug Peterson

Don and Pat Ransford
Ned Rissky
Michael Rogers
Donnell and Jeanne Schwarz
Barbara Sturges
Christina Salerno and Ross Sweeney
Marilynn Tannebaum
Kamen Vatchev
John and Cindy Westerman
Terri Winfree
Steven and Jane Winger

BUSINESSES AND ORGANIZATIONS

Azul Boutique, Inc.
Balagio Ristorante & Banquets
Bennihana Inc.
Bookie's New and Used Books
Boulevard Inn and Bistro—St. Joseph, MI
Broadway in Chicago
Chicago Bears Football Club
Chicago Symphony Orchestra

Chicago White Sox
Chicago Wolves
Classic Cinemas
Cooper's Hawk Winery and Restaurant
Coyote Run Golf Course
Crete Women's Club
Dunning's Gourmet Market and Deli
Freedom Hall—Park Forest
Glenwoodie Golf Course
Goodman Theatre
Idlewild Country Club
Jonathan Kane Salon Spa
Marikay Peter Witlock
Landscape Design
Nathan Manilow Sculpture Park
Nothing Bundt Cakes
Rans and Associates
Ravisloe Country Club
The Drama Group
Upsadaisey Boutique
Wildfire Restaurant

New to IPO? We hope you thoroughly enjoy your evening with us!

To provide the best concert experience for our guests and musicians, we kindly request the following:

- Please silence your cell phones
- No flash photography, concert recording or talking during the performance

A few other things you might be wondering:

- How long with the concert run?
- When do I clap?
- How long is intermission?

These questions and many more can be answered by scanning the QR code or visiting [IPOMUSIC.ORG/FIRST-TIMERS-GUIDE-TO-IPO](https://www.ipomusic.org/first-timers-guide-to-ipo)



BRAVO! BRAVO!

The Illinois Philharmonic Orchestra gratefully acknowledges the following corporations, organizations, foundations and government agencies whose financial contributions were received between June 1, 2022 – May 31, 2023. To learn more about corporate sponsorship or to make a tax-deductible contribution, call (708) 481-7774.

STANDING OVATION (20,000+)

Friends of IPO
Illinois Arts Council Agency

CONDUCTOR'S CIRCLE (\$10,000+)

Gaylord and Dorothy Donnelley Foundation
Gerhard Designing & Manufacturing, Inc.
National Endowments for the Arts

PRINCIPAL CHAIR'S CIRCLE (\$5,000+)

Homewood Hearing Center
Ozinga Foundation

ENSEMBLE CIRCLE (\$1,500+)

Aileen S. Andrew Foundation
Goodheart-Willcox Publisher
Suburban Service League

PRELUDE CIRCLE (\$250+)

Crete Women's Club
MetLife
Waveform, LLC

INTERMEZZO CIRCLE (100+)

Dermatology & Skin Surgery Associates, S.C.

For both your business and family,
we design insurance programs with
your best interests as our priority.

Since 1952 we have represented
excellent, financially solid insurers to
provide our customers with superior,
quality insurance products at fair,
competitive rates. **You can always
count on us to be there when
you need us most.**

Donne
Insurance Group Inc.

www.DonneInsurance.com
Insure@DonneInsurance.com
7777 West 159th Street
Tinley Park, Illinois 60477
phone: 708-429-3100
fax: 708-429-3105

IN MEMORY

Gifts contributed in the name of a friend, loved one, or colleague are a unique expression of thoughtfulness. Donations given to the Illinois Philharmonic Orchestra in memory of others are listed below. Thank you for your generosity.

Matthew Mantell

Helen Polansky
Zenaida P. Harry

James E. Giovanazzi

Anonymous
Kristina Cummings
Mary Ann Davis
Beverly DiTuri
Charles and Suzanne Doll
Kari and Marty Dostalík
Theresa Dostalík
Tom and Alice Hatting
The Francis Gianotti Family
Vincent and Trinetta Giovanazzi

Dean and Eileen Gray
Wayne and Jeannine Koelling
Mary A. Kopac
Richard and Olivia Kopeikin
Bonnie Mason
Dr. and Mrs. Joseph Meisenbach
Constance Meyer
Gene and Lois Miller
McGinnis/Neville Family
Donald and Mindy Olivieri
Mario Pagnucci
Ellen and Gary Pakel
Susan D. Pawlak
Cathy Scully

Henry Whitiker

Cheri Boublis
Richard and Andrea Gibb
Rahel Gilmore
Andrea Hetzel
Jerri Greer & Mike Rogers
Christina Salerno and
Ross Sweeney
Barbara Sturges

Sally DuBois

Patricia Foster

IN HONOR

Donations given to the Illinois Philharmonic Orchestra in honor of others are listed below. Thank you for your generosity.

Kathleen Field Orr

PEO Sisterhood Chapter KA

Barbara Sturges

Andrea and Robert Justin



Robert L. Rossi

Tuesday–Thursday
9:00 a.m. to 7:30 p.m.
Friday and Saturday
9:00 a.m. to 2:00 p.m.

18120 Martin Ave.
Suite 1F
Homewood, IL 60430
(708) 798-6779

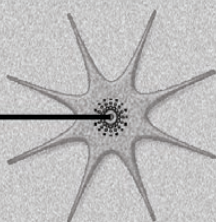
Proud supporter of the IPO!

(708) 609-1257

7 Days a Week

NedTheComputerGuy.com

NedThePhotographer.com



Best Wishes to the IPO

Better Hearing
means a
Better Life

708-799-5520



Charles A. Amenta III, MD
David Frazier II, H.I.S., BS, MEd
Lori Zimmerman, AuD, CCC-A



Your complete solution for better hearing

IT'S A WONDERFUL LIFE
DECEMBER 1-3

A VERY ELECTRIC CHRISTMAS
DECEMBER 9 AT 1 & 4PM

SONS OF SERENDIP
JANUARY 20 AT 7:30PM

OPERA UP CLOSE: A WINTER'S JOURNEY
JANUARY 28 AT 4PM

SOUL MIGRATION
APRIL 13 AT 7:30PM

A CULTURAL KALEIDOSCOPE
2023-24 SEASON

SCAN ME!

THE CENTER FOR PERFORMING ARTS
Governors State University

CENTERTICKETS.NET
708.235.2222

FOR THE FULL SEASON